



FTIR Analysis and Phytoconstituents Screening of *Aegle Marmelos* L. Leaves in Various Extracts

Tejal Deokar *, Sushama Pawar

Department of Zoology, Yashwantrao Mohite College of Arts, Science and Commerce, Bharati Vidyapeeth (Deemed to be University), Erandwane, Pune-411038, India

Address for Correspondence: Tejal Deokar, tejugdeokar@gmail.com

Received:

19.04.2019

Accepted:

25.03.2020

Published:

15.04.2021

Keywords

Aegle marmelos L.; Leaves; Medicinal plant; FTIR; Functional groups; Bioactive components.

ABSTRACT: Medicinal plants are used in traditional medicine to cure various ailments. They consist of a number of bioactive components like alkaloids, flavonoids, glycosides, steroids, tannins, phenolic compounds, etc. are used for the treatment of several diseases. *Aegle marmelos* L. is a spiritual, religious and important medicinal plant commonly called bael. Different parts of bael used in ethnomedicine are known to possess antioxidant, antidiarrheal, antibacterial, antidysenteric, anti-inflammatory, antipyretic, analgesic activities. The aim of the present investigation is to carry screening of phytochemical constituents and Fourier Transform Infrared spectroscopic analysis of various extracts of *Aegle marmelos* L. leaves. The preliminary screening of phytoconstituents was carried out by standard methods. In the *Aegle marmelos* L. leaves the presence of phytochemicals such as carbohydrates, proteins, amino acids, steroids, alkaloids, flavonoids, glycosides, saponins, tannins were present in aqueous, acetone, ethyl acetate, dichloromethane, ethanol, methanol and petroleum ether extract. Results of the FTIR spectra of leaves extracts revealed the presence of various functional groups like alkanes, aldehydes, amides, alcohols, esters, ethers, carboxylic acids, carbonyl group, aromatic compounds, etc. All these compounds pertain to the bioactive components and could be responsible for the medicinal properties of *Aegle marmelos* L. © 2020 iGlobal Research and Publishing Foundation. All rights reserved.

Cite this article as: Deokar, T.; Pawar, S. FTIR Analysis and Phytoconstituents Screening of *Aegle Marmelos* L. Leaves in Various Extracts. Indo Global J. Pharm. Sci., 2021; 11(2): 76-84. DOI: <http://doi.org/10.35652/IGJPS.2021.112001> .

INTRODUCTION

Plants are natural resources of bioactive constituents used in the treatment of various disorders. The medicinal plants and their derivatives have been perceived as an essential source of therapeutically effectual medicine as they contain secondary metabolites, which are potential sources of drugs [1]. The most important bioactive constituents present in medicinal plants are flavonoids, carboxylic acids, carbohydrate, phenols, tannins, alkaloids, terpenoids, steroids and amino acids, etc. [2]. The phytochemical constituents playing a crucial role in medicines can be identified using crude extracts of the plants [3]. Plant crude extracts were containing a high amount of natural antioxidants, which are used as folkloric medicines [4]. Since ancient times, plant extracts were used in medical practices for the treatment of various ailments [5].

Aegle marmelos L. popularly known as Bael in India belonging to the family Rutaceae is an important aromatic

medicinal plant that has enormous traditional uses against various diseases and many bioactive compounds have been isolated from this plant also. It is widely grown in India, tropical and subtropical countries [6].

Various parts of the *Aegle marmelos* L. viz. roots, leaves, stem, bark and seeds are reported to have medicinal value [7,8]. These parts are used for the treatment of a myriad ailments such as chronic diarrhoea, dysentery, peptic ulcer, inflammation and diabetes is documented [9, 10, 11, 12]. Different parts of the plants contain hypoglycaemic, hypolipidemic and blood pressure- lowering factors [13].

Several investigations reported that *Aegle marmelos* L. has been possessing important pharmacological properties including antioxidant, anticancer, anti-inflammatory, antipyretic, analgesic, anti-hyperglycemic and antiproliferative

effects [14, 15, 16, 17, 18]. A number of scientific studies validated that *Aegle marmelos* L. contains numerous phytochemicals in high levels, such as carotenoids, phenolic, alkaloids, pectins, tannins, coumarins, flavonoids and terpenoids [8, 19, 20, 21]. Sawale *et al* (2018) reported that the number of phytoconstituents are present in bael makes useful for several ailments [21]. The leaves are used as febrifuge, astringent, laxative, digestive and expectorant. These are useful in the treatment of abdominal pain, fever, asthma, heart palpitation, stomach pain, ophthalmia, urinary troubles, ulcers, vomiting and swellings [22, 23, 24, 25, 26]. The leaf extracts of bael is used as a medication against a number of chronic diseases like diabetes, pancreatic cancer and arthritis [27, 11, 28, 29]. Different organic extracts of the leaves of *Bael* (*A. marmelos*) have been reported to possess alkaloids, cardiac glycosides, terpenoids, saponins, tannins, flavonoids and steroids [30, 31, 32].

Various techniques can be used to determine and estimate the presence of such bioactive components in medicinal plants. The Fourier Transform Infrared (FTIR) spectroscopic technique is a high-resolution analytical technique to identify the chemical constituents and elucidate the structural compounds [33, 34]. In recent years, FTIR has played a significant role in pharmaceutical analysis for the fingerprint characters and extensive applicability to the samples. Moreover, the FTIR spectroscopy is a rapid, time saving and valuable tool for the characterization and identification of the functional groups present in the plant extracts or powders. Therefore, the aim of the present study was to find out the screening of phytochemical constituents and FTIR analysis in various solvent extracts of *Aegle marmelos* L. leaves.

MATERIAL AND METHODS

Collection and identification of Plant material

The fresh leaves of *Aegle marmelos* L. were collected by taking all the precautions and by avoiding damage to the plant life. The collected plant materials were identified and taxonomically authenticated (TGD-1) by the Scientist D and HOD, Botanical Survey of India, Pune, Maharashtra.

Preparation of plant extracts

The fresh leaves were collected and washed under tap water to remove adhering dust and then dried in the shade at ambient temperature. The shade dried leaves were powdered in a mechanical grinder. The coarse leaf powder was subjected to the successive extraction with different solvents viz. water, acetone, ethyl acetate, dichloromethane, ethanol, methanol and petroleum ether using maceration technique. Then the crude extracts were filtered using Whatman No.1 filter paper. The supernatant was collected, evaporated and concentrated into solid extracts under room temperature. It was stored at 4°C in airtight bottles for subsequent analysis.

Phytochemical Screening

Preliminary phytochemical analysis was carried out identification of various secondary metabolites present in

aqueous, acetone, ethyl acetate, dichloromethane, ethanol, methanol and petroleum ether by using standard methods [35, 36].

Fourier Transform Infrared Spectrophotometer (FTIR) Analysis

The dried leaves powder of different solvent extracts of *Aegle marmelos* L. were analyzed using FTIR analysis. 10 mg of the dried extract powder was encapsulated in 100 mg of KBr pellet in order to prepare translucent sample discs. The powdered sample of each extract was loaded in FTIR spectrophotometer (Shimadzu, Japan), with a scan range from 400 to 4000 cm⁻¹ with a resolution of 4 cm⁻¹ and FTIR spectrum was recorded. The FTIR spectra were used to determine the presence of functional groups in the leaf extracts of *Aegle marmelos* L.

RESULTS AND DISCUSSION

Phytochemical Analysis

The results of phytochemical analysis of the aqueous, acetone, ethyl acetate, dichloromethane, ethanol, methanol and petroleum ether extract of *Aegle marmelos* L. leaves are shown in **Table 1**. It revealed the presence of active constituents like alkaloids, flavonoids, amino acids, steroids, saponins, tannins, glycosides, anthraquinone glycosides, carbohydrates, proteins and phenolic compounds. However, alkaloids were present only in aqueous and ethanolic extracts and the cardiac glycosides were found in ethyl acetate and acetone extracts of *Aegle marmelos* L. leaves. Next to aqueous, methanol and ethanol extracts were found to be more significant as compared to ethyl acetate, acetone and petroleum ether extracts but dichloromethane extract showed less variety of phytochemical constituents. Tannins were observed in all extracts except petroleum ether extract of *Aegle marmelos* L. leaves.

In the present study, bioactive constituents like alkaloids, phenols, flavonoids, steroids and saponins were revealed in *Aegle marmelos* L. leaves extracts. This shows a high level of its possible medicinal values [37, 38, 39]. The phytochemical compounds such as phenols, sterols, tannins, flavonoids, saponins, coumarins and triterpenoids were present in extracts of leaves of *Aegle marmelos* L. [40]. Screening of plants for medicinal value has been carried out by several workers with the help of phytochemical analysis [41, 42, 43]. The presence of flavonoids, saponins, alkaloids, steroids, tannins and phenolic compounds possesses analgesic, anti-allergic, antioxidant, anticancer, antimicrobial, anticarcinogenic, anti-inflammatory and antibacterial activities [44, 45, 46, 47, 48, 49]. The present study clearly indicates that the presence of medicinally important phytochemicals may have accounted for the various therapeutic uses of the *Aegle marmelos* L. leaves.

Table 1: Phytochemical Screening of *Aegle marmelos* L. Leaves Extracts

Secondary Metabolites	Phytochemical tests	Nature of extract						
		Aqueous	Acetone	Ethyl acetate	Dichloro methane	Methanol	Ethanol	Petroleum ether
Carbohydrates	Molisch's Test	+	+	+	-	+	+	+
Protein	Millon's Reagent Test	+	-	+	-	+	+	-
Amino acids	Ninhydrin Test	+	+	+	-	+	+	-
Steroid	Liebermann Burchard Reaction	+	+	+	-	+	+	+
Glycosides a.Cardiac glycosides b.Anthraquinon e glycosides c.Saponin glycosides	Legal's Test	-	+	+	-	-	-	-
	Borntrager's Test	+	-	-	-	+	+	-
	FoamTest	+	+	+	+	+	+	-
Flavonoids	Sodium hydroxide Test	+	+	+	-	+	+	+
Phenols	Ferric Chloride Test	+	-	+	+	+	+	+
Alkaloids	Mayer's Test	+	-	-	-	-	+	-
	Wagner's Test	+	-	-	-	-	+	-
Tannins	Dilute Nitric acid Test	+	+	+	+	+	+	-

(+) = Positive (present) ; (-) = Negative (absent)

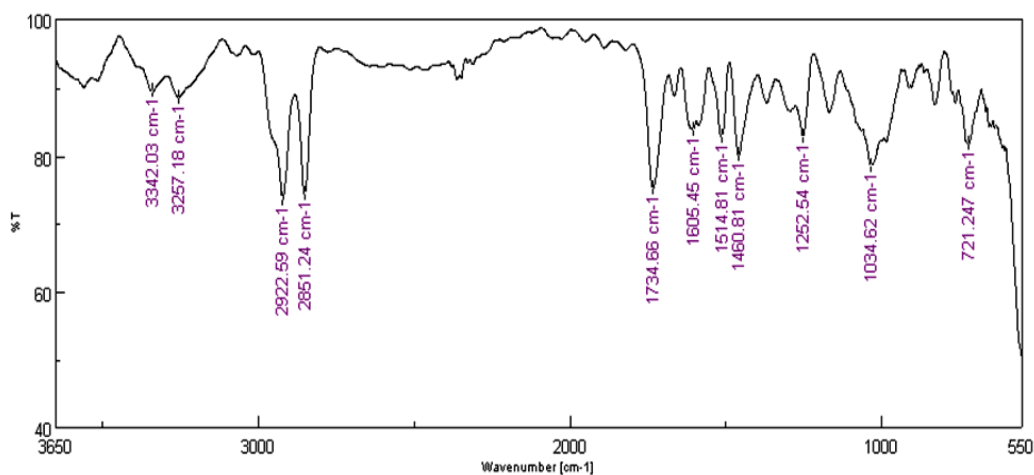


Figure 1: FTIR spectrum of Aqueous extract of *Aegle marmelos* L.

Table 2 : FTIR spectral wave numbers (cm-1) of dominant peak and functional groups obtained from the leaves extracts of *Aegle marmelos* L.

Functional group	Component (Peaks)	Wave numbers (cm-1)						
		Aqueous Extract	Acetone Extract	Ethyl Acetate Extract	Dichloromethane Extract	Ethanol Extract	Methanol Extract	Pet -ether Extract
Alkanes	C-H (stretch)	2851.2 2922.5	2852.2 2919.7	2852.2, 2923.6	-	2924.5	2923.5	2852.2 2921.6
	-CH ₂ (bend)	-	1456	1458.8	-	1459.8	1460.8	1460.8
Alkenes	C-H(stretch)	-	-	3079	-	2851.2	-	-
	C=C(stretch)	1605.4	1607.38	1255.43	1590	1613.1	-	-
	C=C (bend)	721.2	-	832.1,720.2, 980.62	831.1	719.3	921.8	-
Aromatic rings	=C-H (bend)	-	-	720.28, 832.1	-	-	852.3	-
	=C-H(stretch)	721.2	-	-	-	-	-	-
	C=C (bend)	1514.8 1605.4	-	1613.1 1511.9	-	1510.9	1612.2	1589.06
Aldehydes	C=O(stretch)	1734.6	1730.8	1729.8	-	1734.6	1725.9	1735.6
Carboxylic acids and their salts	C=O (stretch)	1734.6	1730.8	1729.8	-	-	1725.9	-
	C- O (stretch)	1460.8	1052.9	1458.8	-	1459.8	-	-
Esters	C=O (stretch)	-	1730.8	1729.8	-	-	1725.9	1735.6
	C- O (stretch)	1252.5	1052.9	1255.4	-	1255.4	-	-
Primary Amines	N-H (stretch)	2922.5,3257.1 3342	2919.7	2923.6,3261.5	3393.1	3355.5	2923.06	2852.2,2921.6 3256.2,3336.2
	C-N (stretch)	-	1052.9	-	-	1032.6	1043.3	1021.
	N-H (stretch)	-	3570.5	-	3604.3	3544.5	3556.09	-
Ethers	C-O (stretch)	1034.6 1252.5	-	1255.4	1273.7	1032.6 1255.4	1043.3	1021.12
Alcohols	O-H (stretch)	2922.5 3342	2919.7 3362.2	2923.6, 3541 3079,3261	3393.14 3604.3	3355.5 3544.5	3211.8 3556.09	2921.6, 3256.2 3336.25
Ketone	C=O (stretch)	-	1730.8	-	-	-	1725.9	-
	C=C (stretch)	-	-	1613.1	-	1613.1	1612.2	-
Nitro compounds	N=O (stretch)	1514.8	-	1511.9	-	1510.9	-	-
Ammonium salts	C=O (stretch)	1460.8 1734.6	1730.8	1458.8	-	-	1460.8	-
Sulphonate salts	S=O (stretch)	-	-	1168.6	-	-	-	-
Carbonate ion	-	-	1456.9	1458.8	1424.17	1459.8	852.3,1460	1460.8
Sulfoxides	S=O (stretch)	-	1052.9	-	-	1032.6	1043.3	-
Halides	C-F C-Cl	-	-	1168.6	-	-	- 852.38	-

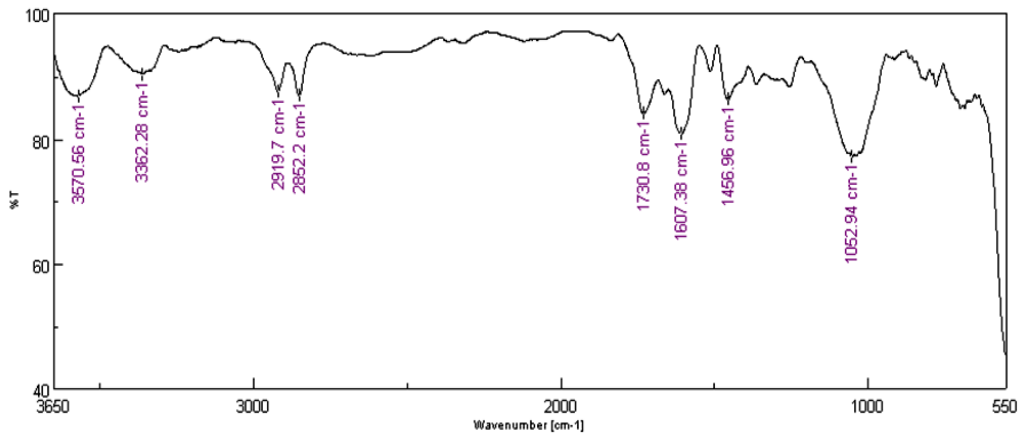


Figure 2: FTIR spectrum of Acetone extract of *Aegle marmelos* L.

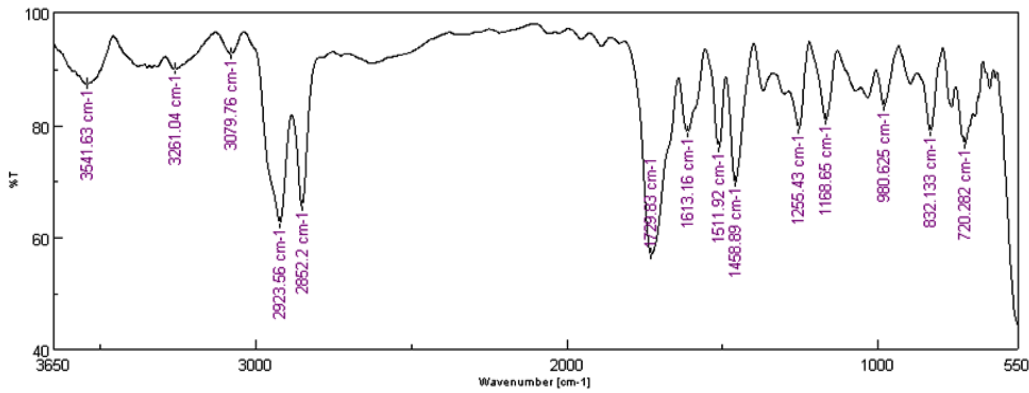


Figure 3: FTIR spectrum of Ethyl acetate extract of *Aegle marmelos* L.

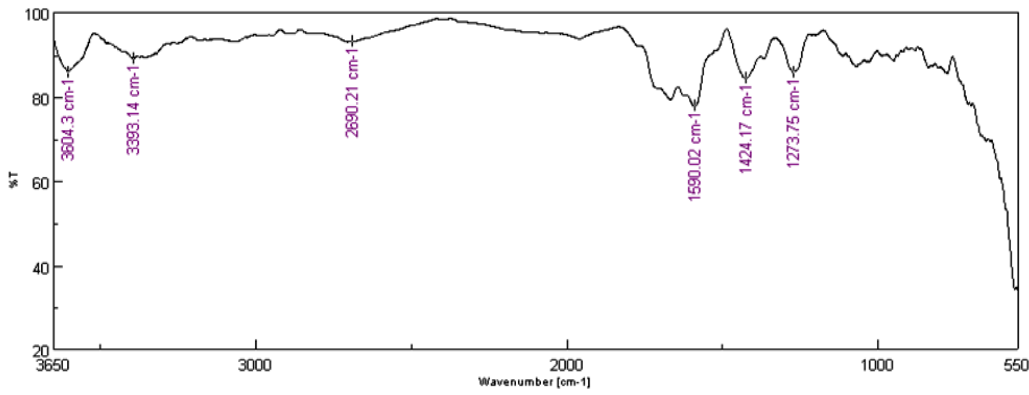


Figure 4: FTIR spectrum of Dichloromethane extract of *Aegle marmelos* L.

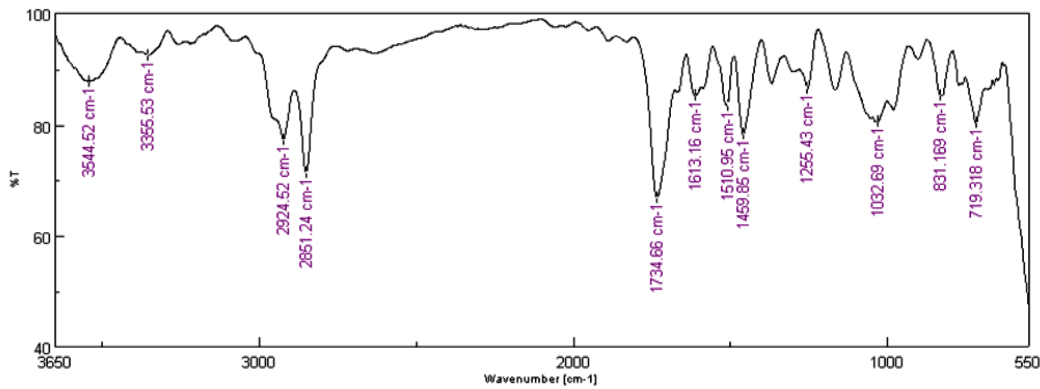


Figure 5: FTIR spectrum of Ethanol extract of *Aegle marmelos* L.

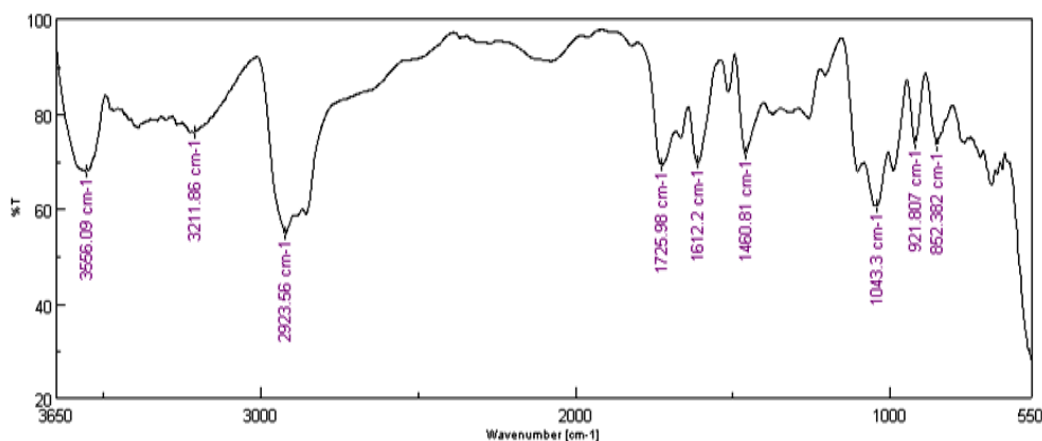


Figure 6: FTIR spectrum of Methanol extract of *Aegle marmelos* L.

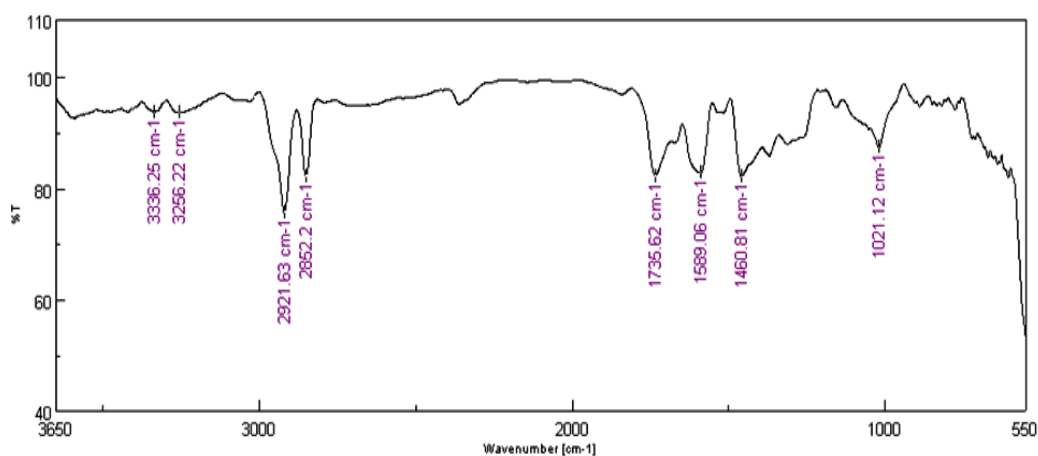


Figure 7: FTIR spectrum of Petroleum ether extract of *Aegle marmelos* L.

Fourier Transform Infrared Spectroscopic Analysis

The spectroscopic technique has become an analytical and most powerful tool for the qualitative and quantitative analysis of pharmaceutical and biological materials [1]. The Fourier Transform Infrared Spectroscopy (FTIR) was used to identify functional groups of the chemical constituents present in plant extracts based on the peak values in the IR region [50]. Results of FTIR spectroscopic analysis in the different solvent extracts of *Aegle marmelos* L. leaves revealed structural information of various functional groups were illustrated in figure no. 1 to 7. The absorption bands and the wavenumber (cm⁻¹) of prominent peaks obtained from absorption spectra were depicted in **Table 2**.

In the present study, the aqueous extract of *Aegle marmelos* L. showed characteristic absorption bands at 3342 and 3257.18 cm⁻¹ revealed the presence of the primary amines (N-H stretch). The peaks at 2851.2 and 2922.5 cm⁻¹ refer to the presence of alkanes (C-H stretch). The strong absorption bands observed at 1734.6 and 1460.8 cm⁻¹ corresponding to C=O stretch and C-O stretch representing aldehydes and a carboxylic acid group. The peaks at 1605.4, 1514.8 and 721.2 cm⁻¹ refer to the presence of alkenes and aromatic compounds (C=C bend). The bands at 1252.5 and 1034.6 cm⁻¹ which indicates the presence of esters and ethers assigned to the C-O stretching (**Figure 1**). The acetone extract exhibited

the broad peaks at 3570.5, 3362.2, 2919.7, 2852.7, 1607.3, 1456.9 and 1052.9 cm⁻¹ represents the presence of functional groups such as alcohols (O-H stretch), alkanes (C-H stretch), alkenes (C=C stretch), aromatic amines (C-N stretch) and carboxylic acids, esters and ethers (C-O stretch). The peak at 1730.8 cm⁻¹ denotes the aldehydes and carbonyl group (C=O stretch) (**Figure 2**).

FTIR spectroscopic analysis of ethyl acetate extract (*Aegle marmelos* L. leaves) was shown in (**Figure 3**). The more intense bands were observed at 3541.6, 3261, 3079.7, 2923.5, 2852.2, 1729.8, 1613.1, 1511.9, 1458.8, 1255.4, 1168.6, 980.6, 832.1 and 720.2 cm⁻¹ corresponding to alcohols (O-H stretch), alkanes (C-H stretch), alkenes (C=C stretch & C=C bend), aromatics (C=C bend), carboxylic acids (C=O stretch), amines (N-H stretch), nitro compounds (N=O stretch), ethers (C-O stretch) and halides (C-F). The characteristic absorption bands at 3604.1, 3393.1, 2690.2, 1590, 1273.7 cm⁻¹, which corresponds to O-H stretch, N-H stretch, C-H stretch and C=C stretch representing alcohols, amides, amines, aldehydes, carboxylic group and alkenes in dichloromethane extract (**Figure 4**). The ethanol extract showed peak intensities at 3544.5, 3355.5, 2924.5, 2851.2, 1734.6, 1613.1, 1510.9, 1459.8, 1255.4, 1032.6, 831.1, 719.3 cm⁻¹ indicates the presence of functional groups such as alkanes (C-H stretch & -CH₂ bend), aldehydes (C=O stretch), alkenes (C=C stretch &

C=C bend), alcohols(O-H stretch), ethers (C-O stretch) and nitro compounds (N=O stretch) (**Figure 5**).

The broad peaks observed in the methanol extract of *Aegle marmelos* L. at 3556.09, 3211.8, 2923.5, 1725.9, 1612.2, 1460.8, 1043.3, 921.6 and 852.3 cm⁻¹ represents the presence of functional groups like alcohols(O-H stretch), carboxylic acid(O-H stretch), aromatics (in-rings) (C=C bend), alkanes (-CH₂ bend), alkenes (C=C bend), aliphatic amines(C-N stretch) and carboxylic acids, esters, ethers(C=O stretch & C-O stretch) (**Figure 6**). The petroleum ether extract showed the absorption bands occurring at 3336.2 and 3256.2 cm⁻¹ refers to alcohols (O-H stretch). The major peaks at 2921.6, 2852.2 and 1460.8 cm⁻¹ indicate the presence of alkanes (C-H stretch & -CH₂ bend) and carboxylic acid group (O-H stretch). The peaks observed at 1735.6, 1589 and 1021.1 cm⁻¹ assigned to the C=O stretch, C=C bend and N-H stretch which corresponds to the presence of esters, aromatics and amines (**Figure 7**).

FTIR gives the broad peaks observed around 3373-3422 cm⁻¹ may be due to the presence of bonded N-H/C-H/O-H stretching of amines and amides [51]. The major peaks observed at near 2848 cm⁻¹ represent C-H symmetric stretching of the methylene group in aliphatic compounds [52, 53]. In the present results, in all extracts of *Aegle marmelos* L. leaves, the peak intensities at 2924.5, 2851.2, 2852.2, 2923.5, 2919.7, 2921.6 cm⁻¹ revealed the presence of alkanes, methylene, methyl ether, methoxy and aldehyde groups respectively.

Gaurav Kumar *et al* (2010) analyzed the methanolic and aqueous leaf extracts of *Bauchinia racemosa* by FTIR spectroscopy revealed the presence of flavonoids, saponins, tannins, proteins, phenolic compounds and carbohydrate as major functional groups [54]. The FTIR spectroscopic studies revealed the presence of alcohol, alkanes, aromatics, alkyl halide, carboxylic acid and halogen compounds from methanolic leaf extract of *Solanum torvum* studied by [55]. FTIR analysis of the ethanol extract of *Ichnocarpus frutescens* revealed the presence of functional groups of amines, amides, amino acids, carbonyl compounds, carboxylic acids, organic hydrocarbons and halogens [56]. Florence and Jeeva (2015) also worked the ethanolic leaf extract of *Gmelina asiatica* confirm the presence of alkanes, carboxylic acids, alkyl halide, alcohol and halogen compounds through the FTIR analysis [57]. Ragavendran *et al* (2011) analyzed the FTIR spectral analysis of *Aerva lanata* leaf extracts and reported that the presence of various functional groups like amines, carboxylic acids, halogens, polysaccharides, sulphur derivatives and organic hydrocarbons are present in the extracts [58].

Manoj and Ragothaman (1999) reported that the strong absorption bands occurring at 3419, 2853, 1633, 1421, 1260, 1073, 816 and 635cm⁻¹ corresponding to O-H, N-H, C-H, C-O and C-Cl/C-CS stretching or bending vibrations representing the presence of ethers, nitrates, alkenes, halogen compounds [59] and also reported that the characteristic

absorption bands were observed around 770-922 cm⁻¹ may be due to presence of the carbohydrates [60]. There is no absorbance in between the region 2220-2260 cm⁻¹ indicates that no cyanide groups in all extracts. This result exhibit all extracts of *Aegle marmelos* L. leaves do not contain any toxic substances.

FTIR technique was used for assessing the type of organic and inorganic components in plants. The FTIR analysis study has confirmed the presence of functional groups, which may be important in the synthesis of bioactive phytoconstituents. Detection of hydroxyl groups is an indication of flavonoids, alcohols and phenolic compounds [61]. *Aegle marmelos* L. is an aromatic plant that is confirmed in present research by the detection of aromatic functional groups. The flavonoids are commonly known as catechins, which are comprised of aromatic rings and hydroxyl groups possessing strong antioxidant activities [62]. Some proteins and lipids have asymmetric stretching due to C-H vibration, which was detected in all extracts of *Aegle marmelos* L. leaves.

In the present study, the very strong absorption band observed at the 3393.1, 3355.5, 3257.1, 3342, 3336.2 cm⁻¹, which indicates the presence of alkaloids due to N-H stretch representing primary and secondary amines. The saponins were found to be present due to the presence of C=O stretch at 1729.8, 1734.6, 1730.8, 1725.9 cm⁻¹ and C-O stretch at 1458.8, 1459.8, 1460.8, 1052.9 cm⁻¹ as carboxylic acid anhydrides. The esters peak for C-O stretch at the 1255.4, 1252.5, 1052.9 cm⁻¹ and C=O stretch at 1729.8, 1730.8, 1725.9, 1735.6 cm⁻¹ were due to presence of steroids. Anthraquinones were present as aromatic ethers with C-O stretch at 1273.7, 1255.4, 1252.5 and 1043.3, 1021.1cm⁻¹. The presence of quinines revealed the flavonoids, tannins, saponins and glycosides were present with O-H stretching and bending vibrations in all extracts of *Aegle marmelos* L. leaves. These findings indicate the presence of alkanes, alkenes, aldehydes, carboxylic acids, aromatics, amines, esters, alcohols, ethers, halides, carbonyl group and nitro compounds in leaves extracts of *Aegle marmelos* L. The stretches such as C-H, C=O, C=C, C-N, N-O and S-OR with the nearest range detecting the same functional groups reported by [63, 64]. From the results, it is confirmed that the presence of secondary metabolites like alkaloids, flavonoids, saponins, tannins, steroids, phenols and cardiac glycosides in the leaves of *Aegle marmelos* L.

CONCLUSION

The qualitative phytochemical analysis of the different extracts of *Aegle marmelos* L. leaves shows the presence of active constituents like alkaloids, saponins, flavonoids, amino acids, steroids, tannins, glycosides and phenolic compounds were screened and the results of FTIR analysis confirmed the presence of characteristic peak values with various functional groups such as alkanes, alkenes, amines, esters, ethers, aldehydes, carboxylic acids, aromatics, alkyl halides and nitro compounds. All these compounds relate to secondary metabolites and might be responsible for the various medicinal properties of *Aegle marmelos* L. Based on the results obtained

in the present study, it could be concluded that, the leaf extracts of *Aegle marmelos* L. contain medicinally important bioactive compounds. This indicates that leaves of *Aegle marmelos* L. can be useful for several diseases and phytoconstituents may act as potential sources of useful drug discovery in the future.

ACKNOWLEDGEMENT

The authors are indebted to the higher authorities of the institute for their constant encouragement and providing necessary facilities throughout the study.

CONFLICTS OF INTEREST

There are no conflicts of interest.

FUNDING SOURCE

There is no source of funding.

DATA AVAILABILITY

Not declared.

REFERENCES

[1] Divya, S.M., Kalaichelvi, K. Screening of primary and secondary metabolites UV-Vis spectrum and FTIR analysis of *Acmella calva* (DC.) R.K.Jansen. *Carmona Retusa* VAHL and *Leptadena reticulata* W & A., *Int.J. of Recent Sci.Res.*, 2017; 8(6) : 17952-17956.

[2] Edeoga, H.O., Okwu, D.E., Mmbaebie, B.O. Phytochemical constituents of some Nigerian medicinal plants., *Afri.J.Biotechnol.*, 2005; 4(7): 685-688.

[3] Savitramma, N., Venkateswarlu, P., Suvrulatha, D., Basha SKM and Venkataramanadevi, C.H. Studies of *Boswellia ovalifoliolata* Bal. and Hearn- An endemic and endangered medicinal plant., *The Biosc.*, 2011; (5):359-362.

[4] Kumbhare, M.R., Sivakumar, T., Udavant, P.B., Dhake, A.S., Surana A.R. In vitro antioxidant activity, phytochemical screening cytotoxicity and total phenolic content in extracts of *caesalpinia pulcherrima* (caesalpinaceae) pods., *pakistan of Bio.Sci.*, 2012; 15(7): 325-332.

[5] Egwaikhede, P.A., Okeniyi, S.O., Gimba, C.E. Screening of antimicrobial activity and phytochemical constituents of some Nigerian medicinal plants., *Adv.in Bio.Res.*, 2007; 1(5-6): 155-158.

[6] Daswani, P., Tetali P., Noshir, A., Birdi, T. Studies on the antidiarrheal activity of *Aegle marmelos* L.unripe fruit : validating its traditional usage., *BMC complementary Alternative Medicine.*, 2009; 9(47) : 1-8.

[7] Parmar, C., kaushal, M.K. Wild fruits of sub-Himalayan region .Ed; kalyani Publications: new Delhi, 1982; 23-25.

[8] Baliga, M.S., Bhat, H.P., Joseph, N., Fazal, F. Phytochemistry and medicinal uses of the bael fruit (*Aegle marmelos* L. Corr.) : a concise review. *Int.J. Food Res.*, 2011; 44: 1768-1775.

[9] Kar, A., Choudhary, B.k., Bandopadhyay, N.G. Comparative evaluation of hypoglycemic activity of some indian medicinal Plants in alloxan diabetic rats. *J.of Ethano.Pharmacol.*, 2003; 84(7): 105-108.

[10] Saxena, A., Vikram, N.K. Role of selected Indian plants in management of type 2 diabetes : a review. *J.of alternative and complementary med.(new York, N.Y.)*, 2004; 10 (2): 369-378.

[11] Baliga, M.S., Thilakchand, K.R., Rai, M. P., Rao, S., Venkatesh, P. *Aegle marmelos* (L.) Correa (Bael) and its phytochemicals in the treatment and prevention of cancer. *Int. cancer therapies.*, 2013; 12(3): 187-196.

[12] Marwat, S.K., rehman, F., Khan, E.A., et al. Useful ethanophytomedicinal recipes of angiosperms used against diabetes in South East Asian Countries (India, Pakistan and Sri Lanka). *Pak.J.of Pharma.Sci.*, 2014; 27(5): 1333-1358.

[13] Lambole, V.B., Murti, K., Kumar, U., Bhatt, S.P., Gajera, V. Physicopharmacological properties of *Aegle marmelos* as a potential Medicinal Tree : Overview. *Int.J. of Pharmacy. Sci.Rev. and Res.*, 2010; 5(2): 67-72.

[14] Arul, V., Miyazaki, S., Dhananjayan, R. Studies on the anti-inflammatory, antipyretic and analgesic properties of the leaves of *Aegle marmelos* corr. *J.of ethanopharmacol.*, 2005; 96(1-2): 159-163.

[15] Faizi, S., Farooqi, F., Rehman, S.Z., Naz, A., Noor, F., Ansari, F., et al. Shahidini, A novel and highly labile oxazoline from *Aegle marmelos* : The parent compound of Aegeline and related amides. *Tetrahedron.*, 2009; 65(5) : 998-1004.

[16] Bansal, Y., Bansal, G. Analytical methods for standardization of *Aegle marmelos* Corr.: a review. *J.Pharm.Edu.Res.*, 2011; 2(2) : 37-44.

[17] Maity, P., Hansda, D., Bandopadhyay, U., Mishra, D.K. Biological activities of crude extracts of chemical constituents of bael, *Aegle marmelos* (L.) Corr. *Indian J. Exp.Biol.*, 2009; 47: 849-861.

[18] Bhatti, R., Sharma, S., Singh, J., Singh, A., Ishar, M.P. Effect of *Aegle marmelos* (L.) correa on alloxan induced early stage diabetic nephropathy in rats. *Indian.J. Exp.Biol.*, 2013; 51 (6) : 464 - 469.

[19] Dhankhar, S., Ruhil, S., Balhara, M., Chhillar, A. *Aegle marmelos* (Linn.) Correa : a potential source of phytochemistry. *J. Medi.Plants.Res.*, 2011; 5(9) : 1497-1507.

[20] Rahman, S., Parvin, R. Therapeutic potential of *Aegle marmelos* (L.) - an overview. *Asian Pac. J. Trop. Disc.*, 2014 : 4(1) : 71-7.

[21] Sawale, k.R., Deshpande, H.W., Kulkarni, D.B. Bael (*Aegle marmelos* L.) a super fruit of an hour: A review. *Int.J.Chem.Stud.*, 2018; 6(3) : 1720-1723.

[22] Kritiker, K.R., Basu, B.D. Indian medicinal Plants periodical Experts ; New Delhi, 1975; vol.I: 499-502.

[23] Anonymous, The wealth of India, Raw material ; vol.I., Publication and Information Directorate; CSIR : New Delhi, 1985; vol. I : 85-91.

[24] Warriar, P.K., Nambiar, V.P.K., Ramakutty, C. Indian medicinal plants. Part I; Orient Longman : Madras ; 1994; 62-66.

[25] Nadkarni, K.M. Medicinal plants of India, Reprint Publication : Dehradun, 2004; 20-22.

[26] Sharma, G.N., Dubey, S.k., Sharma, p., Sati, N. Medicinal values of bael (*Aegle marmelos* L.) corr: a review. *Int.J.Curr.Pharm.Rev.Res.*, 2011; 1 : 12-22.

[27] Shankarnanth, V., Balakrishnan, N., Suresh, D., Sureshpandian, G., Edwin, E., Sheeja, E. Analgesic activity of methanol extract of *Aegle marmelos* leaves. *Fitoterapia.*, 2007; 78: 258-259.

[28] Manandhar, B., Paudel, k.R., Sharma, B., karki, R. Phytochemical profile and pharmacological activity of *Aegle marmelos* Linn. *J. Int.Med.*, 2018; 16:153-163.

[29] Nigam, V., Nambiar, V.S. *Aegle marmelos* leaf juice as a complementary therapy to control type 2 Diabetes- Randomised controlled trial in Gujarat, India . *Adv. in Int. Med.*, 2018.

[30] Venkatesan, D., karunakarn, C.M., kumar, S.S., palins Swamy, P.T. Identification of phytochemical constituents of *Aegle marmelos* responsible for antimicrobial activity against selected pathogenic organisms. *Ethnobot.Leaflets.*, 2009; 13 (11): 1362-1372.

[31] Sivraj , R., Balakrishnan, A., Thenmozhi, M., Venkatesh, R. Antimicrobial activity of *Aegle marmelos*, *Ruta graveolens*, *Opuntia delini*, *Euphorbia royleana* and *Euphorbia antiquorum*. *J.Pharm.Res.*, 2011; 4(5) : 1507-1508.

[32] Chakraborty, M., Jagdish, K.V., Dipak, G., Axay, P.R. *Aegle marmelos* (Linn) : A therapeutic boon for human health. *Int. J. Res. Ayurveda. Pharm.*, 2012; 3(2) : 159-163.

- [33] Hoshimoto, A., Kameoka, T. Applications of Infrared Spectroscopy to biochemical, food and agricultural processes. *App. Spectroscopy.Rev.*, 2008; 43: 416-451.
- [34] Hussain, k., Ismail, Z.,Sadikun, A., Ibrahim, P. Evaluation of metabolic changes in fruit of *Piper Armentosum* in various seasons by metabolomics using Fourier Transform Infrared (FTIR) Spectroscopy. *Int.J.Pharma.Clinical.Res.*, 2009;1(2) : 68-71.
- [35] Kokate, C.K., Purohit, A.P., Gokhale, S.B. *Practical Pharmacognosy*, 1sted.; Vallabh prakashan: New Delhi, 1998.
- [36] Kandelwal, K.R. *Practical pharmacognosy, Technique and Experiments*, 9th ed.; Nirali Prakashan; 2002; 23: 10-23.11 and 25.1-25.6.
- [37] Oloyed, O.I. Chemical profile of unripe pulp of *Carica Pagaya* . *Pak.J. Nutr.*, 2005; 4: 379-381.
- [38] Aja, P.M., Okaka, A.N.C., Onu, P.N., Ibiom, U., Urako, A.J. Phytochemical composition of *Talinum triangulare* (water leaf) leaves. *Pak.J.Nutr.*, 2010; 9(6) : 527-530.
- [39] John De Britto, A., Steena, R.S., Mary, S.R. Phytochemical analysis of eight medicinal plants of Lamiaceae. *J.Res. Plant.Sci.*, 2011; 1 : 001-006.
- [40] Kothari, S., Mishra, V., bharat, S., Tonpay, S.D. Antimicrobial activity and phytochemical screening of serial extracts from leaves of *Aegle marmelos* (Linn.). *Acta.Poloniae.Pharmace. Drug. Res.*, 2011; 68(5): 687-692.
- [41] Dan, S. S., Mondal, N.R., Dan, S. Phytochemical screening of some plants of Indian botanical garden. *Bull.Bot.Surv. India* ., 1978; 20(1-4) : 117-123.
- [42] Ram, R.L. Preliminary phytochemical analysis of medicinal plants of south chotanagpur used against dysentery. *Adv.in plant. Sci.*, 2001; 14(5) : 25-30.
- [43] Mungole, A., Chaturvedi, A. Hibiscus Sabdariffa L. a rich source of secondary metabolites, *Int. J. pharm . Sci.Rev. Res.*, 2011; 6(1) : 87.
- [44] Sary, F. *The natural guide to medicinal herb and plants.*, Tiger Books International : London, 1998 : 12-16.
- [45] Cushnie, T.P.T., Lamb, A.J Antimicrobial activity of flavonoids. *Int. J. Antimicrobial. Agents.*, 2005; 26 : 343-356.
- [46] Aguinaldo, A.M., El- Espeso., Guovara, B.Q., Nanoto, M. phytochemistry In Guevara BQ, Ed.; *A Guide book to plant screening phytochemical and biological Manila*; University of Santo Tomas, 2005.
- [47] Mandal, P., babu, S.S.P., Mandal, N.C. Antimicrobial activity of saponins from *Acacia auriculiformis*. *Fitoterapia.*, 2005; 76: 462-465.
- [48] De-Sousa, R.R., Queiroz, K.C., Souza, A.C., Gurgueira, S.A., Agosto, A.C. Miranda, M.A. et al. phosphoprotein levels MAPK activities and NFkappaB expreaaion are affected by fisetin. *J. Enzyme Inhibition and Med.Chem.*, 2007; 22: 439- 444.
- [49] Bbosa, G.S. Medicinal plants used by traditional medicines practitioners for the treatment of HIV/AIDS and related conditions in Uganda. *J.of Ethanopharmacol.*, 2010; 130: 43-53.
- [50] Gupta, O.P., Ali, M.M., Ray, Ghatak, b. J., Atal, C.K. Some pharmacological investigations of embelin and its semisynthetic derivatives. *Indian.J. physiol.pharmacol.*, 1977; 21 (1).
- [51] Mohan, J. *organic Spectroscopy- principle and applications*; Nasrosa publishers : New Delhi, 2001.
- [52] Bellamy, CNR . *Chemical application at infrared spectroscopy* ; Academic press, new York, 1963.
- [53] Silverstein, R.M., Webster, F.X. *Spectrometric identification of organic compounds*; John Wiley and Sons, New York, 1996.
- [54] Gaurav Kumar, L., karthik and Bhaskara Rao, K.V. Phytochemical composition and in vitro antimicrobial activity of *Bauchinia Racemosa Lamk* (caesalpiniaceae). *Int. J. Pharmaceutical.Sci.Res.*, 2010; 1(11) : 51-58.
- [55] Nithyadevi, j., Sivakumar, R . phytochemical screening and GC-MS, FT-IR analysis of methanolic extract leaves of solanum torvum Sw. *Int.J.Res.Studies in Biosci.*, 2015; 3(9) : 61-66.
- [56] Starlin, T., Raj, C. A., Ragavendran, P., Gopalakrishnan, V. K. Phytochemical screening, functional groups and element analysis of *Tylophora pauciflora* wight and Arn. *Int. Res. J. Pharmacy.*, 2012; 3(6) : 180-183.
- [57] Florence, A.R., Jeeva, S. FTIR GC-MS spectral analysis of *Gmelina asiata* leaves. *Sci. Res. Reporter.*, 2015; 5(2): 125-126.
- [58] Ragvendran, P., Sophia, D., Arul Raj, C., Gopalkrishnan, V.K. Functional group analysis of various extracts of *Aerva lanata* (L.) by FTIR spectrum. *Pharmacology. Online.*, 2011; 1 : 358-364.
- [59] Manoj, K., ragothaman, G. effect of mercury, copper and cadmium on the red blood cells of *Boleophthalmus duosumieri* (Cuv.). *Pollution Res.*, 1999; 18(2) : 149-152.
- [60] Schrader, B. *Infrared and Raman Spectroscopy, methods and applications*, Ed; VCH Weinheim : NEW York, 1995; 203-210.
- [61] Kumar, S., Oanday, A.K. review article, chemistry and biological activities of flavonoids : an overview. *Sci. World. J.*, 2013; 1-17.
- [62] Peterson, J., dwyer, J., Bhagwat, S., haylowitz, D., Hoiden, J., eldridge, A.L., Beecher, G. and Ala-Desamni, J. Major flavonoids in dry tea. *J.Food.Compost.Anal.*,2005; 18(6) : 487-501.
- [63] Hanson, R.K., Spearrin, R.M., Goldnstein, C.S. *spectroscopy and optical diagnostics for gases*, Springer Cham Heidelberg, new york, Dordrecht London., 2016.
- [64] Adina, E.S., Joan, G., Anamaria, D., Paula S., Zoltan, S. *organic compounds FTIR spectroscopy, Macro to Nano Spectroscopy*, jamal Uddin Ed; 2012.